

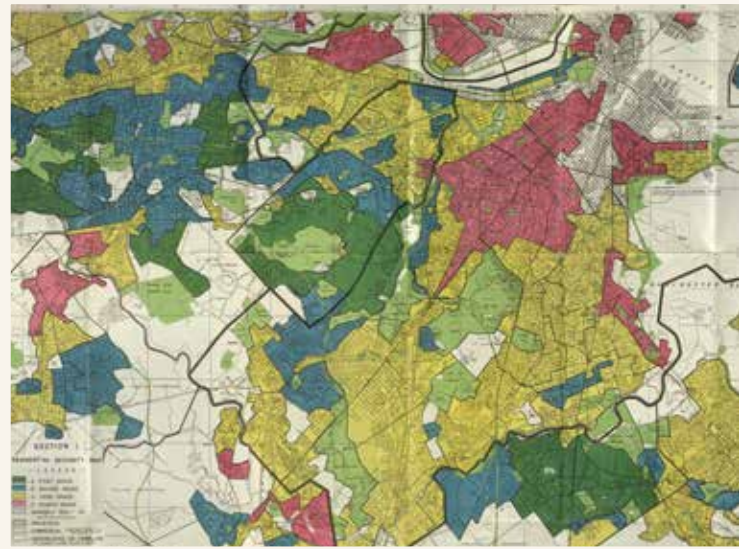
Confronting Racial Injustice



MARCH 11, 2021 6 to 7 PM

Redlining: From Slavery to \$8 in 400 Years

In 2015, the Boston Federal Reserve found the median net worth for Black families in Boston was \$8, in stark contrast to \$250,000 for white families. This discrepancy is largely driven by the gap in home ownership. Join community activists and urban planners as they discuss Boston's history of redlining and discriminatory housing policies, the complicity of the banks and the real estate industry, and the consequent legacy of segregation and racial wealth disparity. We will also identify some specific actions we can take to address the inequities in home ownership.



SPEAKERS

LEWIS FINFER, Co-Director, Massachusetts Communities Action Network

STEPHEN GRAY, Associate Professor of Urban Design, Harvard Graduate School of Design

MODERATOR

ADRIAN WALKER, Columnist, *The Boston Globe*

Massachusetts
Historical Society
Founded 1791

NORTHEASTERN UNIVERSITY SCHOOL OF LAW
**CRIMINAL
JUSTICE
TASK FORCE**

N Northeastern University
School of Law

**REGISTER
NOW!**

Developed by the Northeastern University School of Law Criminal Justice Task Force, Confronting Racial Injustice is a free, five-part series hosted by the Massachusetts Historical Society and sponsored by a number of Boston-area organizations.

FOR THE FULL LIST OF PANEL DISCUSSIONS AND SPONSORS OR TO REGISTER, VISIT masshist.org/confronting-racial-injustice.